

INDUSTRIAL BUILDING FOR SALE

The property is an industrial building, known as "Zanini & Zambelli", currently vacant, consisting of several heterogeneous buildings constructed in the 50s. The buildings are situated in an area bordered at North by Via della Libertà and Via Manin, at East by Via del Lavoro and other private properties, at South by Via Garibaldi and other private properties, and at West by Via della Libertà and other private properties. The area, fully fenced with a retaining wall made of concrete, is easily accessible through several driveways all along its perimeter: one in Via Garibaldi (main entrance), two in Via della Libertà, two in Via del Lavoro and one in Via Manin.

Surface distribution

Site area Sqm	7.155
Covered surface Sqm	4.829
Built area Sqm	5.543

Warehouse	5205
Offices	127
Plant rooms	129
Common space	82

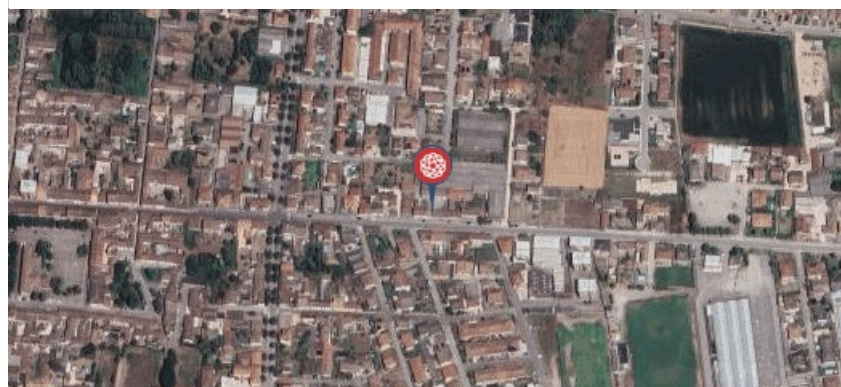
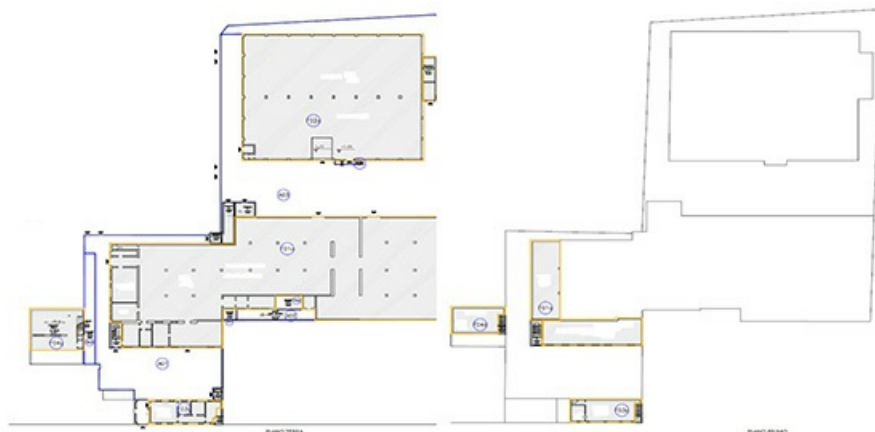


Proposta immobiliare Celtic

Surface detail

Built area	Groundfloor	First floor	Total
Warehouse	4.535	670	5.205
Offices	127	-	127
Plant rooms	129	-	129
Common space	38	44	82
TOTALE	4.829	714	5.543

Planimetry



Near:

Autostrada A21	25 km
Mantova	30 km
Cremona	30 km

DISCLAIMER
Le informazioni contenute nel presente documento hanno finalità esclusivamente illustrative per quanto riguarda le caratteristiche generali del progetto. Il presente documento e le informazioni in esso contenute non rappresentano un'offerta o un contratto, né vanno interpretati come tali. In caso di discrepanza tra le informazioni contenute nel presente documento e le condizioni di vendita o di locazione, prevaleggiano le seconde.



Celtic AM srl
Via Brisa, 7
20123 Milan - Italy
info@celticitaly.it

T: +39 02 89095617
www.celtic-am.com

Celtic real estate proposal